

Prénom : _____

Date : _____

MS

Objectif : Reconnaître parmi les petites bêtes celles qui sont des insectes.

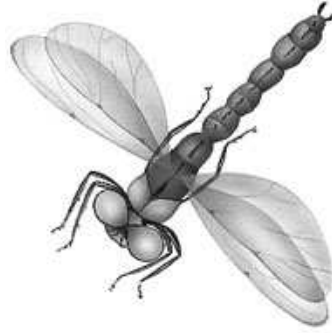
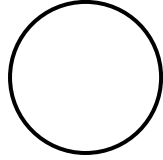
Consignes : Entoure les insectes, pour les identifier, tu dois compter leurs pattes car ils n'en ont que 6 !

Écris le nombre de pattes sous leur nom. Sers-toi des aides de fin de page.

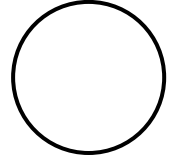
Attention ! Ne confonds pas les pattes et les antennes!



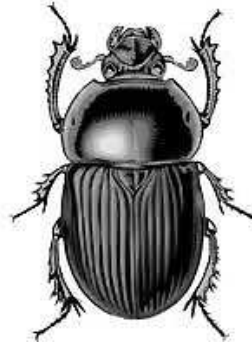
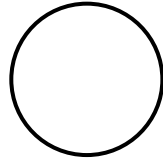
SOURIS



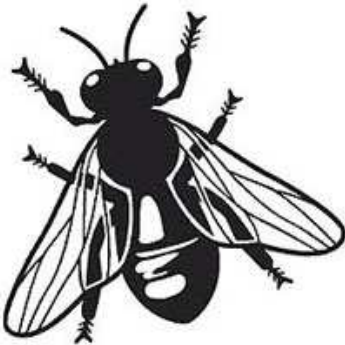
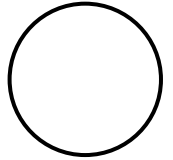
LIBELLULE



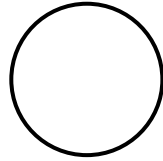
SCORPION



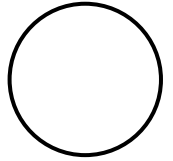
SCARABÉE



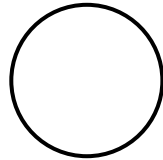
MOUCHE



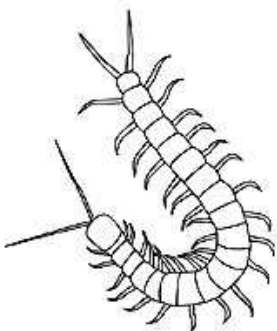
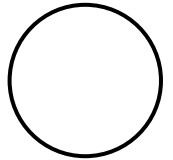
COCCINELLE



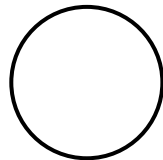
ARAIGNÉE



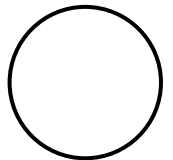
ABEILLE



MILLE-PATTES



LÉZARD



Le **mille-pattes** contrairement à son nom n'a pas mille pattes mais en a **plus de 6** !

Le **lézard** a 4 pattes, la **libellule** en a 6